

## **Raging Red 2025 Info**

We're all looking forward to hosting you at NDSU for the 2025 Raging Red Festival! This letter will hopefully answer any questions you have about the upcoming event. Please note that we're going through a significant construction project this year, which changes the bus drop-off and some of the flow within the building. However, the great news is that the finished construction project will provide more space in 2026!

### **Bus Drop-Off and Parking**

Please see the attached map. Buses will approach the NDSU Music Building (1511 12th Ave N, Fargo, ND 58102) along 12th Ave. N. Please have buses enter the T-2 lot (on the left, before the intersection of 12<sup>th</sup> and Bolley) and have students unload in that lot. Everyone should cross Bolley Dr. at the crosswalk, then enter the Music Building from the entrance at that corner (Bolley and 12th). Once inside, immediately take the stairs to the 2nd floor (this is one of the changes due to construction).

This entrance to the building is at the top of stairs, with no ramp. If anything needs to be brought into the building on a cart, continue past that entrance and follow the building to the left. There will be an entrance to the atrium of the building.

Buses can park at the Fargodome south lot, which is marked on the map at Dome-D. Pick-up will take place in same T-2 lot. We do not recommend having buses load/unload on Bolley (as in previous years) due to the sidewalk closures from construction.

### **Enter the Building and Check In**

Once you have entered the building from the Bolley/12th entrance, immediately head up the stairwell to the 2nd floor. This is to avoid any congestion in the 1st floor hallway, which is used for bands traveling between warmup, performance, and clinic. Students with large instruments may enter the 1st floor hallway to reach the elevator, but please keep clear of that hallway if bands are traveling between rooms. On the 2nd floor, continue down the hallway until you reach the 2nd floor lobby. An NDSU volunteer should help you find your case storage area, where instruments can be set down. Please help direct your students to stack things in logical ways, and to not block pathways or doorways. [Some schools may have case storage areas near the performance hall, and we ask that they be careful to not play or make loud noises in their case storage area. Some schools may have case storage areas in the balcony section of the performance hall, and will also be asked to move as silently as possible while in that space if a band is on stage, and entering/exiting that space may be limited to the transition time between performing bands.]

Directors should then go downstairs (stairs marked on the attached building map) and check in at the check-in table. At the check-in table, please submit all scores, and notify us of any changes to the seating chart you submitted.

If you arrive early, feel free to listen to the other performing bands, step out to get food, or attend the masterclasses (schedule coming out soon). Please encourage your students to not congregate in the case storage areas or in the 1st floor hallway (between the warm-up, performance, and clinic rooms).

## Performance Sequence

Each band will have a host assigned to them, and those hosts will be available 30 minutes before your warm-up time. If they haven't made contact with you by then, it's likely that they can't find you, so please speak with someone at the check-in table if needed. The host will then remain with you and guide you to your warm-up, then to your performance, then to the clinic. Feel free to communicate any needs you have with them. Please remind your students that no instrument playing should be happening in the halls.

## *Warm-Up Room*

The priority for equipment is the performance hall and the clinic room, so the equipment in this room will be minimal. Chairs and stands will be in this room, with minimal percussion instruments. There is no stage crew for this room, so your students should move chairs and stands as needed, with help from the host. At some point during your warm-up, one of our volunteers will instruct the percussionists to follow them to the performance hall to discuss percussion set-up.

A few minutes prior to your performance time, you will leave the warm-up room and have your students walk single-file down the hallway to the performance hall. The students will be entering the performance hall from stage right (conductor's left), so you should have students exit the warm-up room by rows, with the person on the conductor's right leading each line.

## *Performance Hall*

Your host will lead the ensemble (minus the percussionists, who are already there) to the performance hall. Our stage crew will get your seating chart and percussion set up as soon as possible, but there will be a brief waiting period. Once the set up is completed, you will be allowed to take the stage. Please try to identify any issues (need more chairs/stands, too many chairs/stands, etc.) quickly and notify the stage crew if you need anything.

When your performance is completed, please take a moment to enjoy the applause, then be ready to quickly get off stage so the stage crew can begin setting up for the next ensemble. Our hosts and stage crew will be instructed to get you off that stage quickly. The same line order can be made for exiting the stage, and your host will guide you to the Clinic Room. Your ensemble will likely wait in the hall for a bit while the previous band finishes their clinic and exits the room. Please help communicate that your students should be in single file.

## *Clinic Room*

The students will enter the room in the same orientation as the performance (stage right), but chairs and stands will need to be rearranged by your students. Once the clinic is finished, your students will exit the room on the opposite side (stage left), and you will return to your case storage area to put instruments away.

## Food Options

For lunch/meals, we recommend walking your students to the **Memorial Union** (labeled on the map, about a 5-minute walk from the Music Building) where a food court is available. NDSU students say that \$15.00 should be a good amount to get a good-sized meal, but cheaper options are available. Specific restaurants and more info here: [https://www.ndsu.edu/dining/food\\_court/](https://www.ndsu.edu/dining/food_court/)

If you'd like to try to keep your students closer together, the **Residence Dining Hall** (labeled on the map, closer to a 10-minute walk from the Music Building) is available at \$13.00 per person, cash or card. However, they ask

that we notify them when bringing outside guests so they can prepare extra food, so for this option please email [bill.law@ndsu.edu](mailto:bill.law@ndsu.edu) and include the school name and number of people in the party. More info on the dining hall here: [https://www.ndsu.edu/dining/dining\\_centers/residence\\_dining\\_center/](https://www.ndsu.edu/dining/dining_centers/residence_dining_center/)

There are a few restaurants across the street from the Music Building (opposite side of 12th Ave.), but the only one that will probably be able to handle a large group is Jimmy John's. If you have parents or a small group needing somewhere to eat, the other restaurants on that strip might be a good idea.

Connected to the Music Building is a small café that serves Starbucks drinks, light snacks, and lunch items. I would not plan this as your group meal location as they usually only have 2-3 people working at a time. We have notified them about the event, but this is probably best served as an “in addition to our meal” place to get food.

You're also welcome to have food delivered to the Music Building, but we ask that you consider where the students will eat so they're not in the way of the bands moving through their performance route. No food or drink are allowed in the performance halls. We also ask that you collect any trash from bringing in meals and place them in or neatly stacked next to a trash can.

#### Masterclasses

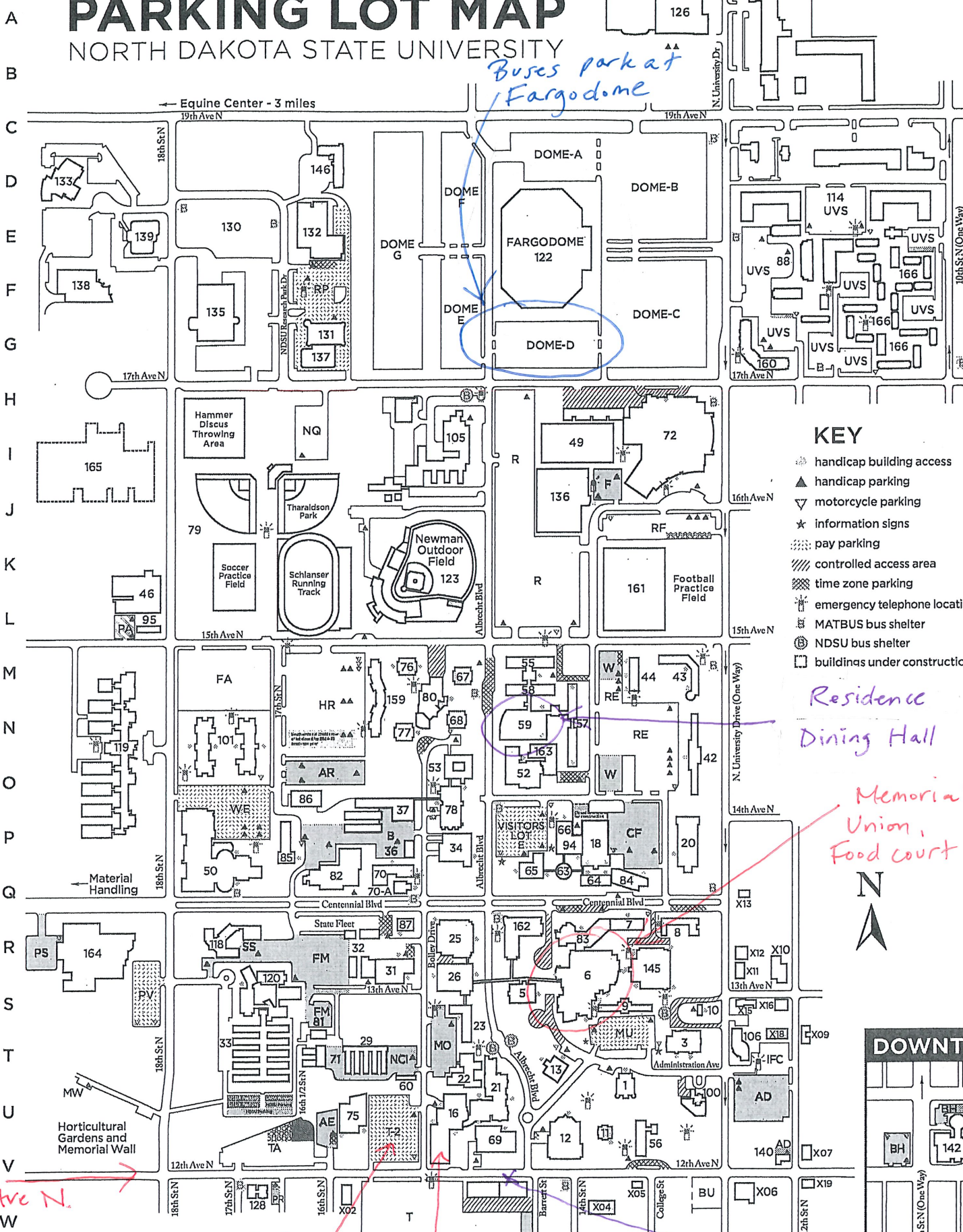
We will again offer masterclasses on various instruments over the three days of this festival, and I will share that schedule out as soon as it's finalized. Masterclasses will take place in Beckwith Recital Hall, the smaller performance hall near the main performance hall.

# PARKING LOT MAP

NORTH DAKOTA STATE UNIVERSITY

← Equine Center - 3 miles

*Buses park at  
Fargodome*



## KEY

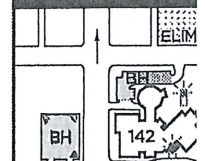
- ♿ handicap building access
- ▲ handicap parking
- ▽ motorcycle parking
- ★ information signs
- ⋮ pay parking
- ▨ controlled access area
- ⊞ time zone parking
- ☎ emergency telephone locations
- 🚌 MATBUS bus shelter
- 🚌 NDSU bus shelter
- 🚧 buildings under construction

*Residence  
Dining Hall*

*Memorial  
Union,  
Food court*



## DOWNTOWN



*12th Ave N.*

*T-2  
Lot, Bus  
Drop-off*

*Enter  
Music Building  
Here, go upstairs*

*Jimmy  
John's*

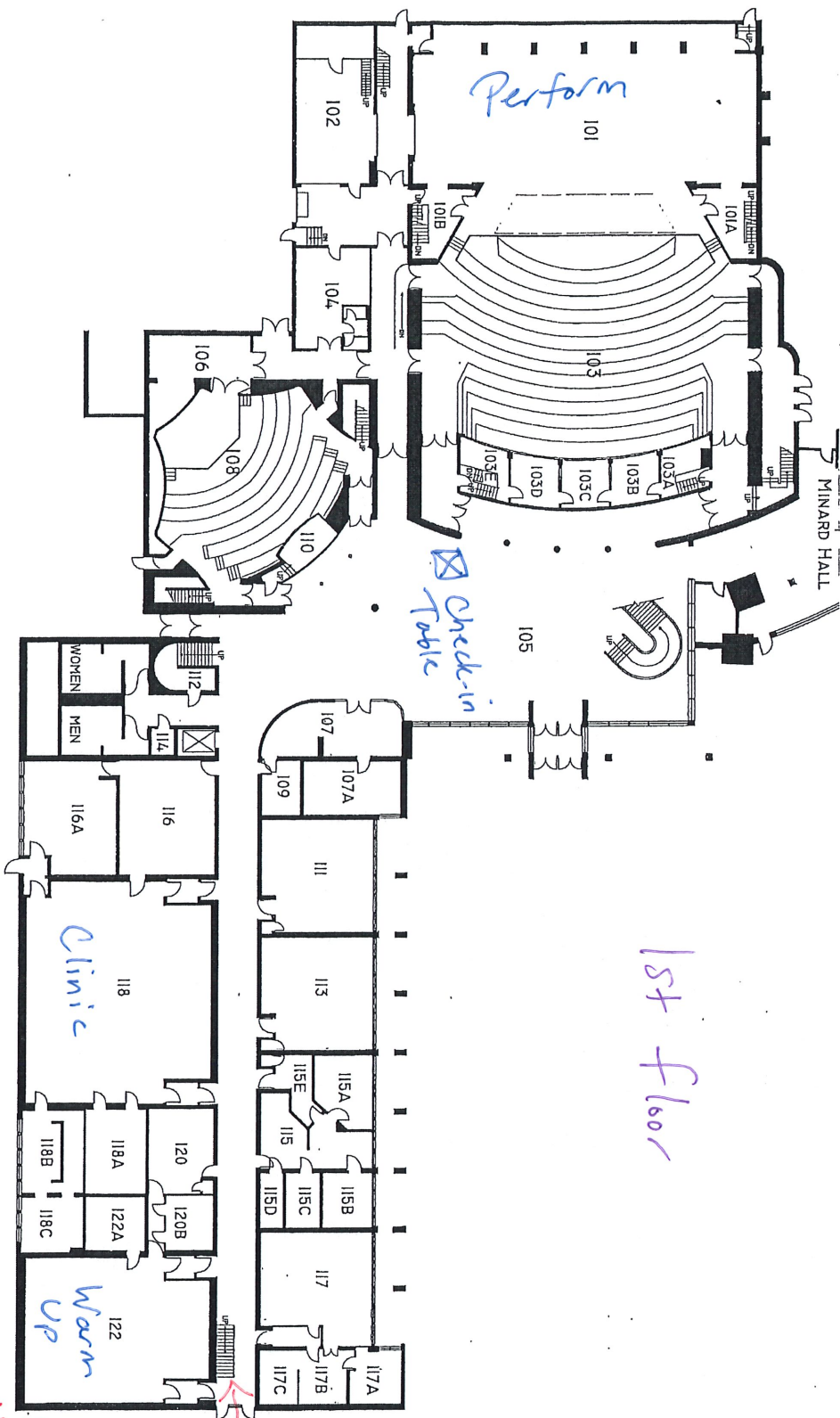
CAMPUS BUILDING NO. 16

MUSIC EDUCATION

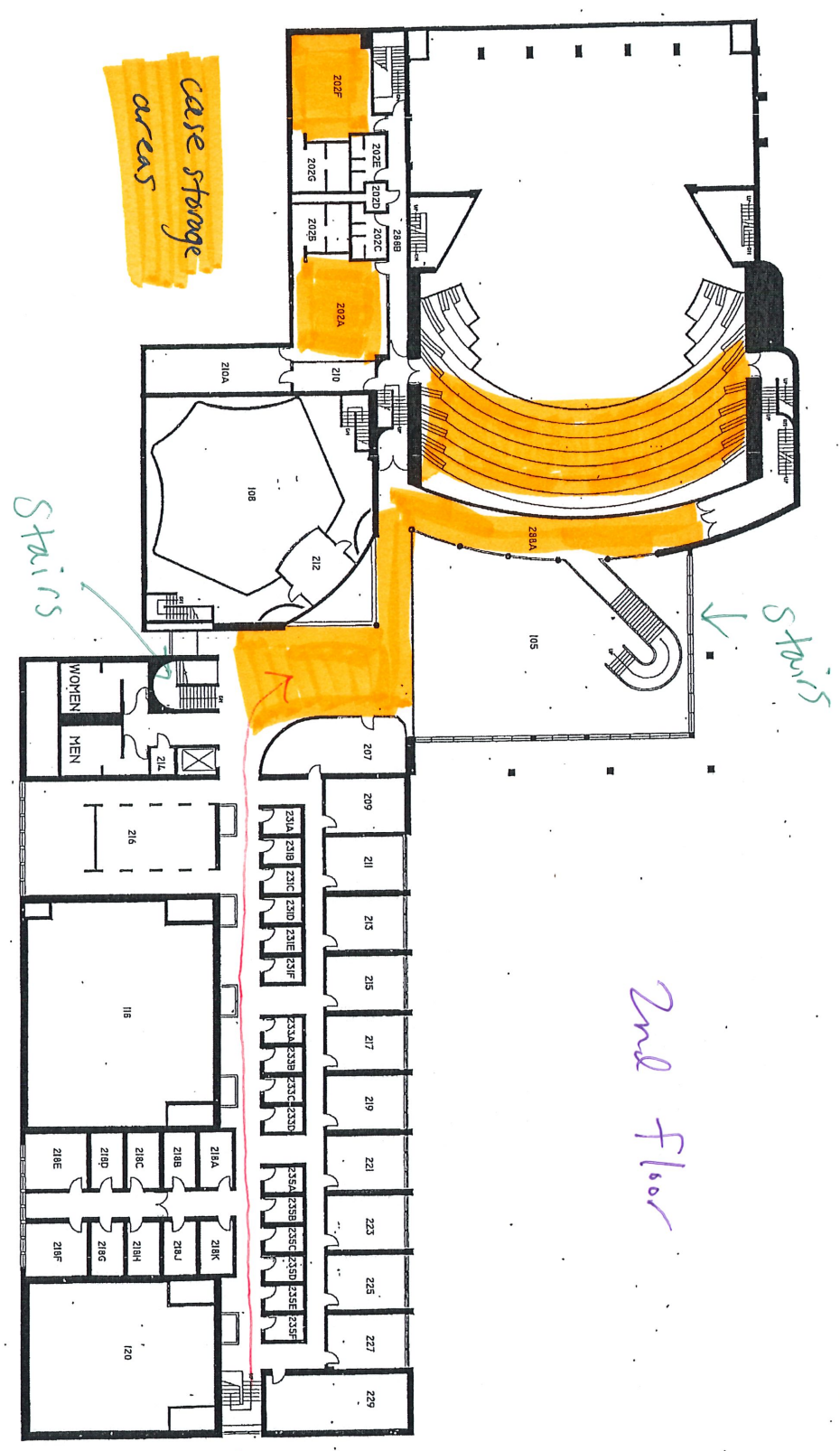
FIRST FLOOR

NORTH

SCALE: 1"=40'-0"  
SITING AND MANAGEMENT PLANNING ACAD. DIVISION TRACKING STUDIC EDUCATION FIRST FLOOR-DWG  
LAST UPDATE: 12/06/2006



12<sup>th</sup> Ave N



case storage areas

Stairs

Stairs

2nd floor

Come upstairs + head to car storage

SCALE: 1"=40'-0"  
S:\FACILITIES\MANAGEMENT\PLANNING\ACAD-DWG\TRACING\MUSIC EDUCATION\Second Floor.dwg  
LAST UPDATE: 12/06/2004